



Your projects,  
our products!

Intelligent solutions for  
roofs and solar systems.

# RoofTech GmbH – Master distributor and wholesaler

RoofTech GmbH, an owner-managed company, has been the exclusive and very successful distributor and wholesaler of S-5!® products in Europe since 2008.

Furthermore, we sell products from BirdBlocker, nVent-Caddy, ARS Solar and our own accessories for PV mounting and snow retention systems. Our recognized good customer service, extensive warehousing and fast order processing are the basis for many years of customer satisfaction.

## Our services for your Projects

- ✓ Product training
- ✓ Free planning and calculation
- ✓ Free support with initial installation
- ✓ Large stock and fast order processing
- ✓ Pre-assembly and individual packaging



## It is particularly important to us

to be able to offer you a specially selected and exclusive product range. It is one of our strength to have all products for you on stock. In addition to digital options, we continue to rely on personal contact for order processing and have been at your side for more than 15 years, both professionally and in an advisory capacity.

Falk Magnus Strobel  
(CEO)

## Our premium partners



### PV-Bird-Protection

To protect the solar system from nesting birds.



### PV-Direct-Attach-Solution

Standing seam clamps and PV direct mounting.



### Cable Management

Professional and sustainable installation of cable trays and conduits.



### Trapezoidal solutions

Innovative solutions for all trapezoidal and sandwich profiles.

**The S-5!® Clamps with two set screws, M8 thread(s) on the top and one M8x16 stainless steel screw** with locking serration, are used for very high loads such as e.g. for single fastenings, fall protection and the S-5!® ColorGard snow guard system.

## S-5!® E-Clamps for Double Folded Seams

The E-clamps made of Aluminium have an opening slot of 7 mm and offer mounting solutions on double standing seam roofs.

**Official approved by the DIBt.: Z-14.4-719.**

## S-5!® S-Clamps for Snap Lock and Angle Seams

With a bigger opening slot of 14 mm the S-Clamps are extremely versatile for angle seams and a big number of industrial seams such as Snap-Lock or Snap-together profiles from Fischer-Kliptec, Schlebach, Prive-Stylinov, Ruukki or similar.

## S-5!® Z-Clamps for Round Bulb Seams

Z-Clamps are specially developed to fit profiles having round "bulb" seams with a max. 22 mm diameter such as profiles of Kalzip®, Bemo®, Aluform, Euroseam® or Kingspan. **Official approved by the DIBt.: Z-14.4-719.**

## S-5!® B-Clamps for Copper Roofs

The B-clamps with an opening slot of 6 mm are the perfect choice for copper roofs with double standing seam. The B-clamps are **made of Brass** and thus enable material-compatible installations on copper roofs.

## S-5!® N-Mini and N1.5-Mini Clamps for Nail Strip Seams

The N-Mini clamp is suitable for 1 inch (25 mm) high and the N1.5-Mini clamp and NH1.5-Mini clamp for 1.5 inch (38 mm) high Nail-strip profiles such as those from Schlebach or similar.

## The S-5!® H-Mini for larger Horizontal Profiles

The H-Mini clamp is developed for different types of larger horizontal seams up to 32 mm width.

## The S-5!® R465 Mini Clamp

is specially designed for the profiles Zambelli RIB-Roof 465, Domico GBS and similar. The exact fit with the set screws on both sides are the basis for the high holding forces.

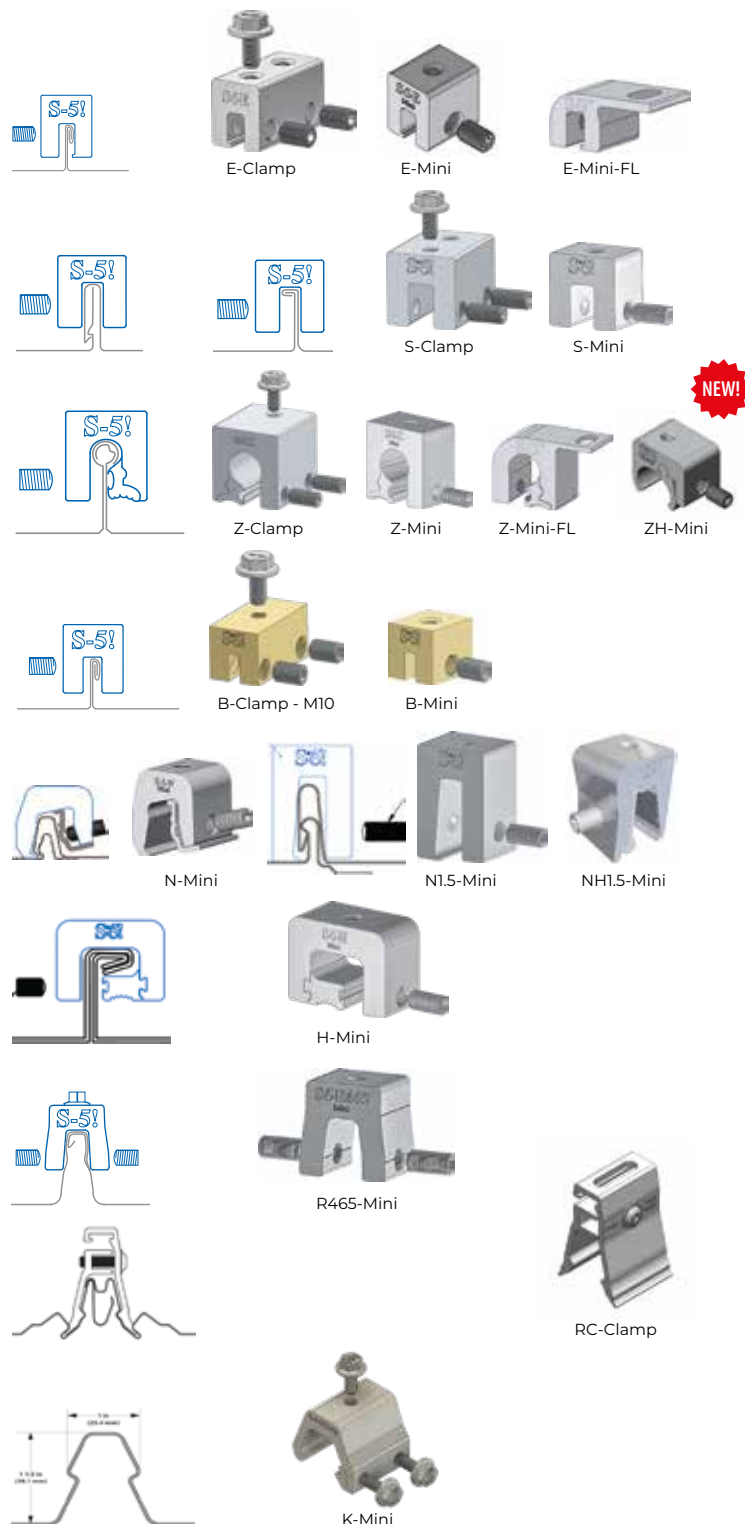
## S-5!® RC clamp for the Riverclack® Profi

With the two-part RC clamp, different superstructures can be attached in a stable and penetration-free manner.

## S-5!® K-Grip Mini for various internat. profiles such as Domitec, Klip-lok, Saflok, etc.

Thanks to two different inserts, the K-Grip clamps can be optimally adapted to different profiles.

The S-5!® clamps have been tested on a large numerous seam types and metal types from various manufacturers by independent testing institutes in the USA.



**All not stocked S-5!® products can be imported from S-5!, USA, after customer request – even in small quantities and in short time with air freight. If you would like a quote, further information or advice on a project, please do not hesitate to contact us.**

**In contrast to plagiarism and conventional seam clamps, only the original S-5!® Clamps are all multiple tested by third-party accredited test-labs.** The S-5!® E- and Z-Clamps families have in addition the official technical approval by the DIBt: abZ aBG Z-14.4-719

**The S-5!® Mini clamps** with their high holding forces are usually best suited for fastening PV modules with rail systems. Many well-known manufacturers and distributors of mounting systems have been successfully using the S-5!® clamps with their rail systems worldwide for years.

The **S-5!® Mini clamps with M8 thread** can be used for C-rails or combined with different adapter plates for mounting rail systems with bottom or side screw channel.

The **E-Mini-FL** for double folded standing seam and **Z-Mini-FL** for round bulb seams are the right choice for mounting rail systems with screw channel on the underside. They are fastened with hammerhead screws through the slotted hole in the flange.



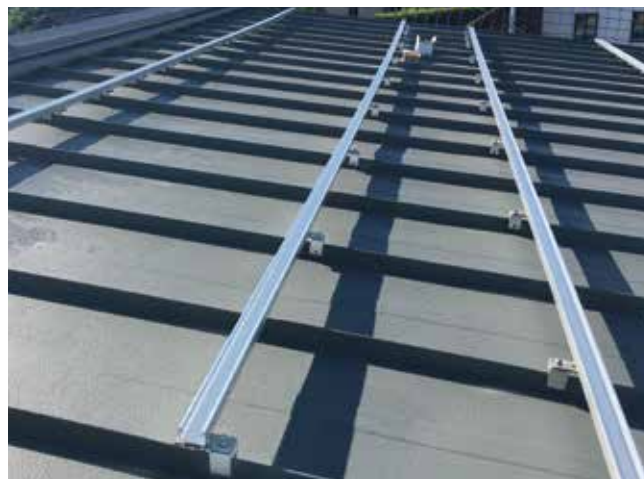
Rail with screw channel underneath stable mounted on S-5!® E-Mini-FL clamp.



S-5!® Z-Mini for round bulb seams mounted under a C-rail.



Rail with side screw channel mounted with angle adapter on S-5!® E-Mini.





**With the S-5!® PVKIT® and the S-5!® Mini clamps** (with M8 thread), framed PV modules with frame heights of 30 mm to 46 mm can be mounted directly on standing seam roofs without complex and heavy rail systems.

Das S-5!® PVKIT® MidGrab consists a module clamp made of aluminium, pre-assembled on the stainless steel mounting bar and a module support disc made of stainless steel.

### Special Advantages:

- ✓ Easy transport, no cuttings or unusable remains.
- ✓ Pre-assembled module clamp saves time and money.
- ✓ Flat screw head provides a smooth and clean surface.
- ✓ Less wind loads due to roof-parallel mounting of the modules.
- ✓ Only one module is fixed crosswise to the seams – therefore less cross-movements and stresses for the metal roof.
- ✓ Up to 80% weight saving compared to conventional rail systems.
- ✓ UL 2703 listed ground path is automatic.



S-5!® PVKIT MidGrab mounted on S-5!® Mini clamp



S-5!® PVKIT EdgeGrab mounted on S-5!® Mini clamp

Free planning and calculation



**NEW!**

The **PVKIT in black**, as well as the **Ground Log** and the **Bonding Clip**, are now available from us!



MidGrab module clamp can be used as Middle- and End-Clamp.



# Our solutions for trapezoidal roofs

## Installation with the EcoFlat and EcoHigh short rail

The simplest and most cost-effective option for your trapezoidal roof:

**The installation system with the EcoFlat and EcoHigh** impresses with few components and thus efficient and fast installation. In addition, the trapezoidal rails are pre-drilled with two holes on the underside and fitted with an EPDM sealing tape.

**The short rails** enable flexible and efficient planning and installation. The prefabricated trapezoidal rails are particularly easy to handle and can be fastened with just **two approved thin sheet metal screws per rail**. Thanks to the short format, the available roof area can be optimally utilized.

**The mounting runs along the corrugation**, ensuring optimum fastening and load distribution.

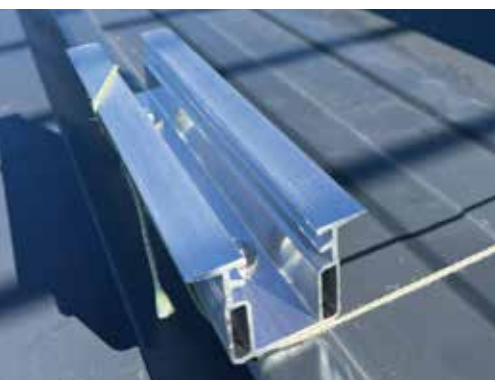
The **EcoFlat** and **EcoHigh** short rails have the advantage that the modules can be mounted on both the short and the long side. This significantly increases the flexibility of installation planning.



ETA approved



**The EcoMid and EcoEdge module clamps** are designed to withstand extreme pressure and suction loads caused by snow and wind.

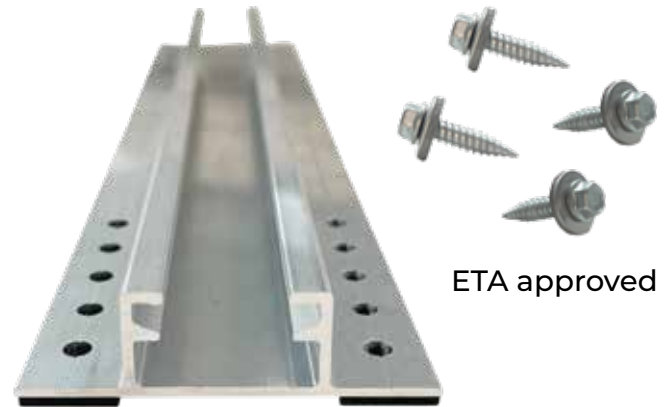


## EcoBasic and the Multi-Trapezoidal Bracket

### EcoBasic

The **EcoBasic short rail** impresses with its few components and therefore efficient and fast installation. In addition, the trapezoidal rails are pre-drilled with several holes on the underside and fitted with an EPDM sealing strip. This means that the EcoBasic **can be used flexibly on all tape sheet profiles with different distances in corrugation**.

The EcoBasic is ideal for all projects in which the modules are planned parallel to the corrugation. **It is mounted across the corrugation using four approved thin sheet metal screws**, which ensures optimum fastening and load distribution and allows the optimum clamping point to be selected on the module.



### Multi-Trapezoidal Bracket

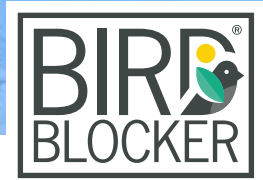
The stable Multi-Trapezoidal Bracket, made of 5mm stainless steel, with mounting bracket and self-adhesive sealing strips, can be flexibly adapted and mounted on many shapes of trapezoidal sheet metal and sandwich profiles with an upper cord width up to max. 43mm (according the approval). Fastening with four approved thin sheet metal screws with sealing washers.

- ✓ **Very stable and corrosion-resistant:** Material 5mm stainless steel V2A.
- ✓ In contrast to rigid brackets, it **can be flexibly adapted** to many trapezoidal shapes.
- ✓ **Height-adjustable** mounting bracket with two M11 slotted holes - thus optimally adjustable in height in order to avoid cramping.
- ✓ **Self-adhesive sealing strips** on the innerside of the mounting bracket ensure mounting fixation and optimal tightness.
- ✓ **Flexible attachment** of mounting rails, the S-5!® PVKIT®, cable conduit, maintenance routes, etc.





# BirdBlocker - To protect the solar system from nesting birds



## For all these reasons, the solar system should be protected from nesting birds:

- Soiling of the solar system and the roof by nesting and bird droppings is a major nuisance and reduces electricity production considerably.
- The nests disrupt the natural underside ventilation of the solar system. This results in a lower energy yield and an increased risk of fire.
- Damage to the cables and to the modules can cause malfunctions.



## BirdBlocker hinders and disturbs the birds very much when they try to get under the solar system.

It is important that the BirdBlocker strips are installed around the solar installation and that the needles of the BirdBlocker stand firmly on the roof surface to provide resistance. As the fastening with the stainless steel clips does not damage the PV module, the warranty remains intact!

## Advantages over conventional solutions:

- ✓ **Three needle lengths (8,5 cm, 12,5 cm und 20 cm)** for different distances between module and roof surface.
- ✓ **Simple, even retrofitting, installation** with stainless steel fastening clips.
- ✓ **No scratching or damage** to the roof surface.
- ✓ **UV-resistant HDPE plastic** and recyclable.
- ✓ **TÜV tested:** UV resistance, product safety, REACH.
- ✓ **10-year product guarantee.**
- ✓ **Anti-rodent Masterbatch**





# BirdBlocker for Protection of the PV-System

## from nesting birds

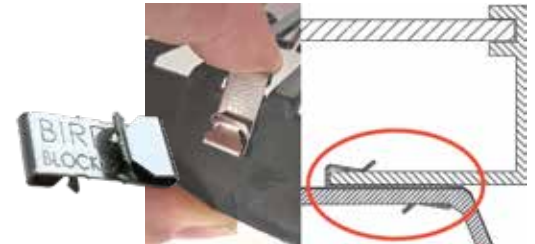


### BirdBlocker - installation without screwing, drilling or gluing.

We recommend installing the BirdBlocker preventively, i.e. at the same time as the PV installation (retrofitting is also easily possible). BirdBlocker fits on 95% of common modules and sub-structures (retractable systems are unfortunately not suitable).

#### Standard stainless steel fastening clip

The BirdBlocker strips can be attached with the standard stainless steel fastening clips to 90% of the modules that have an inner flat (at least 10 mm wide) profile with frame thicknesses of 1-2 mm.

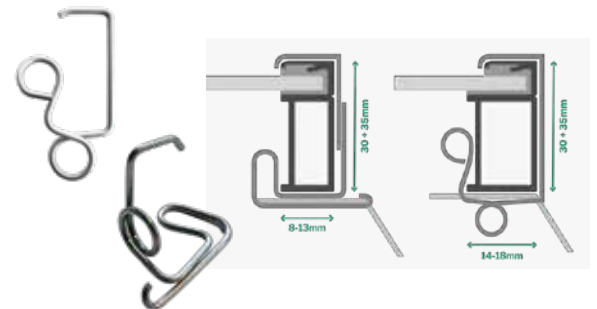


#### Universal clamps for box frames

However, there are some modules with box frames on the short inside that do not have a sufficient frame plate, for which special universal clamps with the following dimensions (width x height) have been designed:

8-13 x 30 mm and 8-13 x 35 mm

14-18 x 30 mm and 14-18 x 35 mm



#### BirdBlocker Installation-Tool

Using the BirdBlocker installation tool makes it easier to attach the BirdBlocker strips to the inner module frame. This allows the BirdBlocker strips to be pushed onto the module frame with the pre-installed standard fastening clips.



#### Pre-assembled mounting clips

Optionally available: BirdBlocker strips with 4 pre-assembled clips. This means that this work step can be skipped. This saves considerable preparation time and installation effort.



## Innovative solution for mounting solar systems on flat roofs

**EcoRoofMount 1, 2 and 3 offer modern and sophisticated solutions for mounting PV systems on flat roofs.** The system is based on a robust mounting rail that is combined with specially developed attachments. Depending on requirements, the variants are divided into three categories - from the cost-efficient basic to the flexibly adjustable premium solution.

Free planning  
and calculation



### EcoRoofMount 1

The **cost-effective solution** for PV mounting on the flat roof. Quick and easy to install - ideal for standardized applications with a focus on **price-performance**.



### EcoRoofMount 2

Our **all-rounder**: the **perfect balance between functionality and costs**. Stable, well thought-out and, thanks to its adjustable fly usable - ideal for a wide range of flat roof projects. The proven choice for anyone who wants to combine efficiency and adaptability.



### EcoRoofMount 3

The **premium version** with variably adjustable tilt angle - maximum flexibility for individual requirements. Perfect for projects where **efficiency, alignment and yield are the focus**.

## Professional installation of cable trays and pipes

PV systems and other installations can only remain functional in the long term if cables and lines are routed correctly on the flat roof.

### Special Advantages:

- ✓ **Easy to transport onto the roof** due to low weight. Packed in cardboard boxes.
- ✓ **Easy and quick to attach** with clips or pins in the holes on the top of the feet. No time-consuming drilling and screwing.
- ✓ **UV-stable, corrosion-resistant** and durable: material PE and PP.
- ✓ Can withstand **static loads** from 1,330N up to 6,670N (136 kg - 680 kg).
- ✓ **Optimized load distribution**, minimized point loading and notch effect.
- ✓ **Protection of the roof cladding** by foam rubber on the underside of the feet.
- ✓ **Compatible with bitumen and plastic roofing membranes, metal roofs, etc.**
- ✓ **Mounting level optimally 102 mm** above the roof surface.



**Pipe and conduit laying** with Tool-Free clamps.



**Cable Trays** and **Curves Clips** now also available from us!



**Cable tray** made of perforated sheet - fastened with Tool-Free Pins.

### Caddy Solar Cable Clip

- ✓ For simple and quick attachment of two cables with an outer diameter of 5-7 mm.
- ✓ For mounting on module frames with 1.5-2 mm sheet thickness.
- ✓ Can be flexibly attached to the frame in four directions.
- ✓ Tested CADDY Armour corrosion protection, class C4: long lasting protection - over 15 years.



**Solar cable clip** - simple and durable solution for professional installation

### Twist cable tie

- ✓ Save time during installation with a single twist and without additional cutting tools.
- ✓ Safe and strong self-cutting technology.
- ✓ UV-resistant.
- ✓ Protects your hands from scratches during use at work.
- ✓ Tensile strength: 23 kg.



**Twist cable ties** - efficient and cheap installation



## S-5!® ColorGard® 2.0 and RoofTech Single- or Double-Tube holders

**NEW!**

### RoofTech Single-Tube holder (Typ-S & Typ-T)

Snow retention with the RoofTech Single-Tube holder made of 2.5 mm aluminium - mounted on the S-5! Mini clamps - is the classic snow retention with a standard 32/2 mm round tube.

**NEW!**

### RoofTech Double-Tube holder (Typ-S & Typ-T)

With the RoofTech Double-Tube holder made of 3 mm aluminium, mounted on two S-5! mini clamps that fit the seam or on a trapezoidal sheet metal, it is often possible to support significantly higher loads than with conventional double-tube snow retention systems.

**Please note:**

Due to the leverage effect, double-tube snow retention rows should only be used in conjunction with overlying snow retention rows.

### S-5!® ColorGard® 2.0 is the stable snow retention in the color of the metal roof.

**NEW!**

This is achieved by inserting a metal strip of the roofing into the ColorGard snow retention rail. This eliminates the need for time-consuming and expensive powder coating as with conventional snow retention systems.

### Optional extras for even more functionality

- ✓ New ice stoppers with a modernized, functional design.
- ✓ Matching diamond holders are available as an option for stylish diamond covering.



Single-Tube holder on S-5!® Z-Mini clamp for round bulb seam



Double-Tube holder on S-5!® E-mini clamp for double standing seam



S-5!® ColorGard® mounted on S-5!® clamps with two set screws



For permanently stable cable mounting directly on the module frame.

## Special Advantages:

- ✓ Direct attachment to the module frame of 1-2 solar cables with a diameter of 6-9 mm.
- ✓ Quick and easy to install without tools, saves time and effort on site.
- ✓ Protects the cables from sharp edges, minimizes the risk of damage and maintains system integrity.
- ✓ Cable installation above the roof cladding prevents sagging and ensures a secure installation.
- ✓ Compatible with BirdBlocker mounting.
- ✓ Simple and structured packaging.



## Solarud Nano Waterdrain Clip



The Solarud Nextgen Waterdrain Clip prevents the accumulation of water and dust by draining the standing water on the lower frame side of the solar module.



- ✓ Ideal for PV module installations with low inclination (up to 15°).
- ✓ Four flexible plastic wings allow flexible adjustment to frame heights between 28 mm and 40 mm (and module depths between 8 and 11 mm).
- ✓ The Solarud Clip has a special anti-clog design that prevents clogging of the drain due to deposits of dust and sand.
- ✓ Robust, UV resistant and temperature resistant up to 105° C.
- ✓ 6-year product guarantee.

### Stainless steel saddle for the S-5!® E-clamps

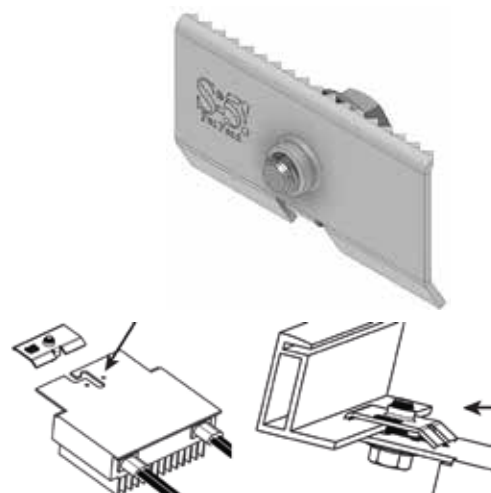
The stainless steel RoofTech E-Saddle creates a separation between the double standing seam of the copper roof and an aluminum S-5!® E-clamp, E-Mini or E-Mini-FL and thus prevents electrochemical corrosion. This is a cost-effective alternative to the S-5!® B terminals made of brass.



### S-5!® MLPE Mount™ clip for mounting micro inverters and DC power optimizers on the inner module frame.

This is a cost-effective and flexible alternative to existing mounting solutions.

- ✓ Stainless steel material - very stable and corrosion-resistant.
- ✓ Simple and flexible installation with an M8 stainless steel screw.
- ✓ Can be installed on the module frames of most manufacturers.
- ✓ Serrated edges secure and ground the optimizer at any point on the module frame.



### Adapter plates

for flexible mounting of rail systems with the S-5!® Clamps.

Adapter plates can be combined flexibly and economically with the S-5!® clamps for mounting rail systems with bottom or side screw channels.



Adapter Plate V2A 80 x 30 mm.



Angle- / L-Adapter Alu 38 + 58 mm.



Angle Adapter Alu mounted on S-5!® E-Mini Clamp.



**Your reliable and professional partner**



## Extensive warehousing and delivery capability

We work closely with our partners/manufacturers so that we can offer you a suitable solution for your project at any time. We keep large quantities of the products in stock for you so that we can guarantee fast order and dispatch processing.

## Fast order and dispatch processing

It is particularly important to us that we offer you smooth order and shipping processing. In addition to digital options, we continue to rely on personal contact and have been at your side for more than 15 years, both professionally and in an advisory capacity.

Together with our shipping service providers, we try every day to deliver the goods to you or your customers safely and punctually at the agreed time. Digital feedback on the status of the order is part of our service, along with the option of choosing different shipping options.

## Short-term shipping throughout Europe

We can offer you same-day shipping (fast lane) if you send us your order in the morning. You also have the option of collecting the products from our warehouse yourself or we can deliver the goods directly to your construction site by the next working day with express delivery.

The respective installation instructions must be observed for the applications and installation of the products (please request if necessary). The suitability of the products for the intended use is checked by the buyer and user themselves. In the event of non-observance of our installation instructions, when installing or assembling our products with components of the competition and when using and combining further components which were not purchased from us, we shall not be liable for any resulting defects and damage. The warranty is excluded in this respect. The information provided in our documents and the drawings and photos shown serve to clarify individual details and are only recommended information. RoofTech GmbH and the producers do not accept any further liability from this. Descriptions, pictures and drawings may represent development stages that are not available in this form. RoofTech GmbH and the manufacturers do not accept any responsibility for the installation, suitability, effect and applications or any further liability. The contents of our documents are protected by copyright. S-5!® products are protected by international patents.

Follow us on social media!



Our certificates

Deutsches  
Institut  
für  
Bautechnik



intertek

